

# Ascend

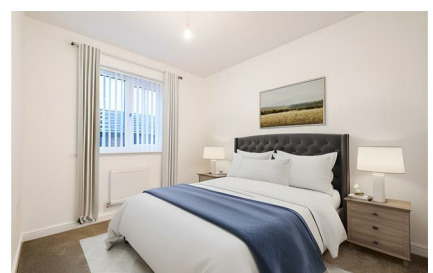
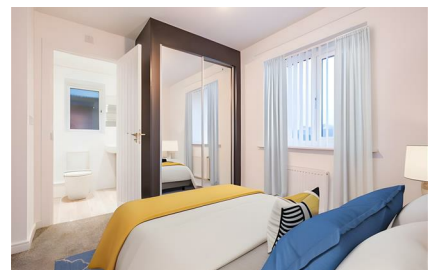
Built on higher standards



## 67 Stokers Drive Bolton BL6 5UE

- Brand new home
- Integrated dishwasher, fridge freezer & washing/drying machine
- Security alarm
- Private driveway or parking space
- Patio & Garden
- Fitted wardrobe to master bedroom
- Wood-effect flooring downstairs; carpet upstairs
- Pet friendly
- Blinds to the front of the property & all bedrooms

## £1,350 PCM



Nestled within the heart of Horwich, Barton Quarter introduces an enticing collection of 3 and 4-bedroom homes to rent.

The Tailor is a contemporary 3-bedroom home thoughtfully designed with families in mind.

As you step into the entrance, you'll appreciate the convenience of a strategically placed downstairs WC. The spacious front-facing living room is awash in natural light, courtesy of its captivating feature window.

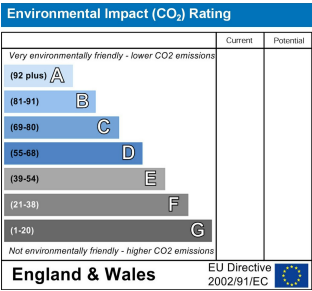
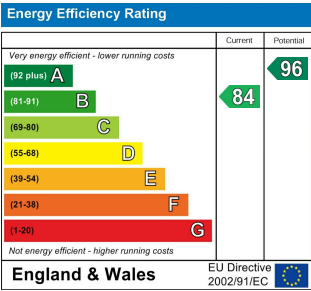
This area seamlessly flows into the open-plan kitchen and dining space, adorned with modern and fresh worktops, cupboard spaces and integrated appliances. To enhance your living experience, French doors lead to the rear garden, effortlessly connecting your indoor and outdoor spaces.

Venturing upstairs, you'll find a generously proportioned master bedroom with its own ensuite bathroom, accompanied by another well-appointed double bedroom and a versatile single room suitable as a children's bedroom or home office. To top it all off, a modern and contemporary family bathroom adds the finishing touch to this welcoming home.

Not only this, the property comes with its own private parking space for added convenience!

With a history rooted in its former railway and mill town heritage, Horwich has gracefully transformed into a thriving and dynamic community. Barton Quarter is thoughtfully positioned to provide residents with easy access to fantastic local amenities, including the Middlebrook Retail Park, and a diverse array of shops and leisure options, such as the renowned Bolton Wanderers football club.

This appealing community caters to the needs of both local residents looking for a vibrant environment and commuters seeking seamless connections to nearby towns and cities like Bolton, Chorley, Manchester, and Preston.



# Ascend

Built on higher standards

0161 707 7584

192 Monton Road, Monton, Manchester, M30 9PY

monton.sales@ascendproperties.com,  
monton.lettings@ascendproperties.com  
www.ascendproperties.com



These particulars, whilst believed to be accurate are set out as a general outline only for guidance and do not constitute any part of an offer or contract. Intending purchasers should not rely on them as statements of representation of fact, but must satisfy themselves by inspection or otherwise as to their accuracy. No person in this firm's employment has the authority to make or give any representation or warranty in respect of the property

